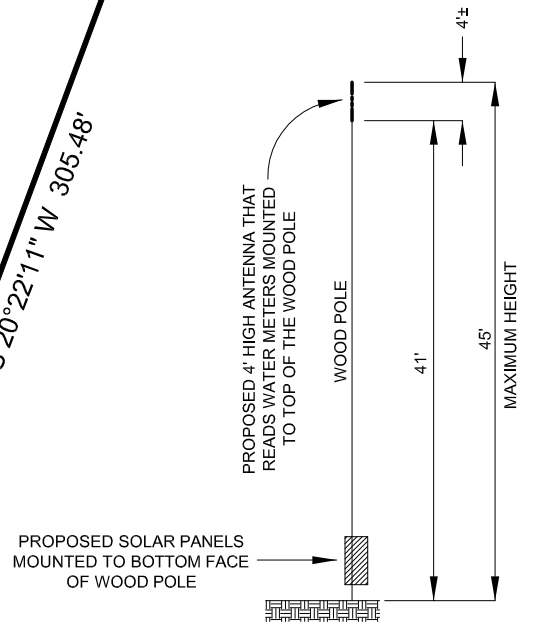


# PLOT PLAN

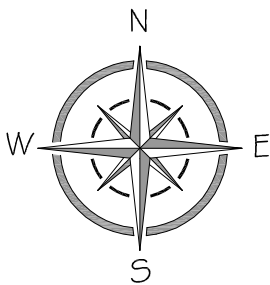
LOT 7, BLOCK 3, PUEBLO WEST TRACT NO. 317, LOCATED WITHIN A PORTION OF THE NE 1/4 OF SECTION 5, TOWNSHIP 20 SOUTH, RANGE 66 WEST OF THE SIXTH PRINCIPAL MERIDIAN. PUEBLO COUNTY, COLORADO.

(SPECIAL USE PERMIT)

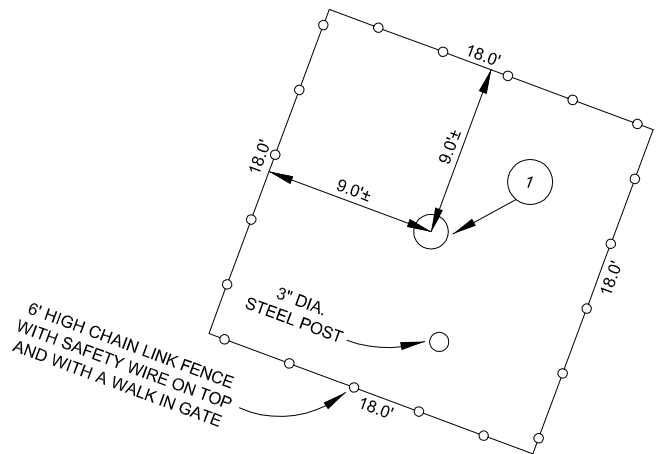


PROFILE DETAIL  
(NOT TO SCALE)

**BROKEN BOW DRIVE**  
(60' WIDE RIGHT-OF-WAY)



SCALE 1" = 40'



IMPROVEMENT DETAIL  
(NOT TO SCALE)

① = MAXIMUM 45' TALL WOOD POLE WITH AN ANTENNA ON TOP AND A SOLAR PANEL MOUNTED AT THE BOTTOM

REVISION 1: 2-19-2020 (NOTE MAXIMUM HEIGHT)

PROJECT: PUEBLO WEST METRO DIST. DESCRIPTION: SPECIAL USE PERMIT (BROKEN BOW DRIVE)	
SHEET: 1 OF 1	JOB NUMBER: 2019-542
DATE: 12-10-2019	FILE NAME: 2019-542 SUP
SCALE: 1" = 40'	REF. JOB NO.

**Cardinal Points**  
Surveying Inc.

(719) 253-0874 - (719) 253-0878 fax

4601 Eagleridge Place, Suite 110  
Pueblo, Colorado 81008

